

# CURTAIN UP!

Spring 2025



# NODA

For every stage  
London



NODA

Group member benefits:

- NODA insurance
- Magazine subscription
- Theatre Summer Schools
- Show reports for your group shows
- Health and safety
- Monthly newsletter
- Safeguarding and licensing support
- Event listings on our website
- Theatre support directory
- Model CIO Constitution
- Programme and poster competitions
- National and regional social events
- Model contracts for production team
- National and regional support
- Dedicated youth co-ordinators
- Training and networking events
- Support factsheets
- DBS checks
- Long service awards
- Legal advice

NODA  
15 The Metro Centre  
Peterborough  
PE2 7UH

T +44 (0) 1733 374 790  
E info@noda.org.uk  
W www.noda.org.uk

© 2024 National Operatic  
and Dramatic Association  
Registered CIO 1171216  
Registered Company 241572

**NODA Insurance**  
nodainsurance.co.uk  
01823 250 736

**NODA Safe**  
noda.org.uk/nodasafemembers  
0345 257 6632

**NODA Legal Assistance**  
info@noda.org.uk

**NODA Social Media**  
facebook.com/nodanational  
facebook.com/NODALondon

The views expressed do not  
necessarily represent those of  
the National Operatic and Dramatic  
Association. Advertisements  
within NODA Today do not imply  
endorsement of the products  
or services advertised.

Welcome



At last, it looks like the Summer is on its way, together with lots of activity with societies busy rehearsing their next shows. I hope all is going well and look forward to receiving details of those shows as they go onto the Fb page and into our fixture list for this magazine. You will see that the Dates for Your Diary include the NODA London Celebration Day 2025 with a link to follow for further details. You will also find the link to the District Winners together with a nomination form should you wish to nominate a new Regional Representative for your District. It's a fun day and gives us all the opportunity to meet other members within the NODA London family and share in each other's success. I look forward to meeting you there.

Jacquie Stedman – Editor



What a superb plethora of wonderful dramas and musicals you have been placing before your most appreciative audiences. It is a delight to see many of your productions and to be enthralled by the artistic and creative talent that is evident in the London region.

Group membership renewals commenced on 1st April so do look out for your reminder email and alert your Treasurer. Preparations for our AGM and Celebration Day on Sunday 22nd June 2025 at The Radlett Centre are well in hand and watch out for more news.

**Pam Armstrong**  
**Regional Councillor – NODA London**  
pam.armstrong@noda.org.uk

Dates for your diary

- NODA London AGM & Celebration Day 2025  
Sunday 22 June 2025
- NODA Theatre Summer School 2025  
Saturday 26 July 2025 to Saturday 02 August 2025
- NODA AGM & Presidential Gala 2025  
Saturday 27 September 2025



**Matt Bentley**  
District 1

Spring has well and truly embedded itself in London, marking the time when we all emerge from the dark depths of winter and plunge headfirst into the dark depths of the theatre. We rinse the stage of glitter and feathers from panto season, and replace them with a bold willingness to try new things.

Already this year, District 1 has seen Sedos bring a fresh vibrancy to Jeanine Tesori's classic Violet. This is a show that often has pacing difficulties, but this production, with its very talented cast, zipped along like the bus journey it portrays.

Opera Integra, back in fine form after having to cancel last year, presented a very fine production of Carmen, set in 1992 Seville and performed in a church. And

it was delightful to see Centre Stage taking a chance on the London premiere of Head Over Heels, which set a lesser-known 16th Century fable to the music of the Go-Gos, with an emphasis on diversity and inclusivity. A very encouraging start to the year.

Of course, this all came on the heels of a fine panto season. I managed to cover all the pantos in both Districts 1 and 4, and was enthused to see such a varied programme. Pantos really do showcase a broad spectrum of our community, and the most successful were those that truly were designed as entertainment for the whole family, not talking down to children, but not trying for a level of niche-ness that even the adults struggled with.

This does give rise to the opportunity to remind societies that do panto, though, that often less is more. Children (and increasingly adults) don't always have the attention spans many panto writers assume, and their tolerance for extended set pieces that don't lead anywhere is fairly limited. So don't be afraid to cut anything that doesn't work in rehearsals and, most importantly, keep it short. If you must do two acts, keep each one to 45 minutes and you'll have an even more pleased crowd!

So please, keep taking the opportunity to try new things. There are some exciting productions in the works for the rest of the year, and I can't wait to see what you do with them.

St Faith's Players – *The 39 Steps*  
Wimbledon Light Opera Society – *Sweet Charity*

I'm sure you will agree, a steady stream of productions to suit

all tastes. Head on over to the respective society platforms for more detailed information on all the productions outlined above.

In the meantime, if anyone

from within the District has any concerns or queries, please do contact me at your convenience at the usual e-mail address – [thomas.lennon@noda.org.uk](mailto:thomas.lennon@noda.org.uk).



**Robin Kelly**  
District 4

To be honest, it has been rather a strange start to the year for me in District 4. Holidaying for the whole of January in celebration of Mrs K's 70th, I missed all of the district pantomimes. Fortunately, District 1 representative Matt Bentley had agreed to cover for me – payback time for the occasions I have covered for him! He was then able to put together nominations for the pantomime category of NODA London awards. Evidently, I missed some great shows and performances!

The latest on the Orchard Theatre, closed due to RAAC concrete issues, is that reopening has been pushed back to late 2025 or early 2026. This is as a result of

delays in completing the roof replacement and other improvements such as upgrading fire safety systems to meet new rules following the Grenfell fire. The additional work has put another £10 million onto the budget. Uncertainty on the exact date for reopening unfortunately does not help planning for Dartford Amateur Operatic & Dramatic Society, who at least have their own small venue Heathfields Hall to use. Their youth section continues to thrive and I look forward to seeing Little Shop of Horrors there at the beginning of May.

Erith Playhouse continue with an eclectic mix of productions, ranging from Euridice to a

musical for children – Annabel Broom the Unhappy Witch. Bob Hope Theatre presented Alys, Always, in March and are currently in rehearsal for Mosquitoes in May. The Priory Players will perform Family Planning at the end of May.

Back on the musicals front, Eldorado Musical Productions used some excellent graphics for their production of Beauty and the Beast. This contrasted with the Bromley Players production of Everybody's Talking About Jamie which made imaginative (and choreographed) use of school desks for multiple purposes. Next musical up will be the WWOS Spamalot at the Churchill Theatre.



**Position Vacant – currently covered by Thomas Lennon**  
District 3

While every effort is being made to appoint a locally based Regional Representative to the District, it has been a pleasure to continue deputising in West London. Thank you to our 12 affiliated societies for bearing with us while we strive to appoint to the vacancy. I trust it is not too much of a strain having to deal with 'little old me' in the interim.

The new season has well and truly arrived and I have already attended the following shows;

BROS Theatre Company – *The Kids Left. The Dog Died. Now What?*  
Cygnet Players – *Sweeney Todd The Demon Barber Of Fleet Street*

By the time this edition gets to print we will also have had the following productions in April;

HLO Musical Company – *Another Op'nin, Another Show!*  
Putney Light Operatic Society – *Footloose*

Worcester Park Dramatic Society – *Improbable Fiction*  
Zodiac Musicals Society – *Spring Spectacular*

And before we know it, it will be May with the following performances to look forward to; TOPS Musical Theatre Company – *The Producers*

Carlton Theatre Group – *Richard III*  
Cygnet Players – *A Bunch Of Amateurs*





**Des Wilby**  
District 5

As expected, December proved to be the start of a busy pantomime season with lots of laughs, plenty of bad jokes and very enthusiastic audiences! My first visit was with the Parish Players for their highly entertaining production of the Wizard of Oz. This was shortly followed by WODS Juniors who staged Aladdin for their 40th anniversary show. With a cast of 37 children aged between 5 and 15 this was most certainly an ambitious challenge for the Production Team given the young ages and fact that for many this was their first

appearance on stage. I was even more surprised when visiting Edge Hill Players for a performance of Dick Whittington to see a cast in excess of 60. Unfortunately, I did not get to visit with The Pantoloons (Robin Hood) or Magdalene Players (Dick Whittington) but I'm confident these were both entertaining and likewise well supported. District 5 has since quietened down as groups completed auditions and are now in the final throws of rehearsals for their May 2025 productions. In what looks to be a busy month

I already have visits scheduled with CODA (Curtains), WODS (Shrek the Musical), Parish Players (The Ghost Train) and Magdalene Players (School for Wives). The announcement of District award winners was received with much enthusiasm and I look forward to seeing many representatives from District 5 at the June 22nd Celebration Day.



**Paul Daynes**  
District 6

The year in District 6 started with two Pantomimes, Sleeping Beauty by Woodford Pantomime at The James Hawkey Hall and Little Red Riding Hood by Woodhouse Players at the Welsh Church Hall in Leytonstone. Both were wholesome family affairs but Woodford gave fifteen performances to over 4,500 people and Woodhouse Players played to a few less in a small church hall. This showed that regardless of budget and facilities, pantomime works in many varieties but all have laughter and audience participation in common.

CADOS brought Greek tragedy to their home at Mornington Hall in Chingford. Their adaption of Sophocles' ancient play

Antigone was a marvellous piece of theatre, laced with imaginative ideas from a creative team willing to experiment. This scene shows the citizens celebrating victory in a battle fought.



Antigone - CADOS

In contrast, Havering Music Makers took their audiences to the banks of the Thames for their musical Wind in the Willows. This picture shows Ratty, Mole and Mrs Otter in front of one of the 30 plus projected images that gave wonderful backdrops to the various scenes. All were created by the digital talents of member Paula Harris Brett.



The Wind in the Willows - HMM

Woodhouse Players performed two clever and well-crafted one-act plays that showed acting of the highest quality and comedy writing that brought laughter from the audiences. 12 Hr Life is a charming piece about two young people serendipitously finding each other for just 12 hours. Ashleigh Cole and Clovis PJ were magical together and enthralled the audience as their friendship developed.



12 Hr Life - Woodhouse Players. Ashleigh Cole as Samantha Clovis PJ as Dylan

The other one-act play was written by Woodhouse member Tom Mallender who showed his talent at being able to write genuinely funny comedy. The play showed the challenges for three elderly friends as they wrestle with modern technology including tablets, robotic vacuum cleaners and Lance, their voice activated

smart speaker. This beautifully observed situational comedy was a great success.



Artificial Intelligence - Woodhouse Players

Theydon Bois Drama Society brought us a murder mystery with Curtain Up on Murder. Set at an end of pier theatre, this amateur drama group meets shady goings-on as one by one members of the cast and crew are murdered. A great twist in the tale showed this to be a play, within a play, within a play - however all became clear in the end. This picture shows the body of Ginny being found by Alex and Sylvia.



Curtain Up on Murder - Theydon Bois Drama Soc.



LADS - The Ladykillers

LADS performed The Ladykillers. This delightful and entertaining play taken from the Ealing comedy played to packed houses and very appreciative audiences. An ensemble cast and a very innovative set (with revolve) showed the versatility of the group as Professor Marcus and his 'gang' of inept thieves wrestled with the morals of a very stubborn elderly lady.

Artificial Intelligence, 12 hr Life and scenes from Antigone will be going forward to appear and compete at the 42nd Waltham Forest Drama Festival this spring. We wish them all well.



Whether you are looking for  
something traditional like  
*Jack and the Beanstalk* or *Cinderella*, or  
something a bit different like  
*The King's New Clothes* or *Sherlock Holmes*  
there is something for every group  
**pantoscripts.org.uk**

## NODA Corporate Partners

There to support your next  
production

### GOLD PARTNER

**ANDREW LLOYD WEBBER**  
SHOW LICENSING

Andrew Lloyd Webber  
Licensing  
alwshowlicensing.com

ALW Show licensing is  
the home to The Really  
Useful Group's theatrical  
licensing for schools  
and amateur theatre  
groups.

### GOLD PARTNER

**concord**  
theatricals

Concord Theatricals  
concordtheatricals.co.uk

Concord Theatricals  
includes the catalogues  
of R&H Theatricals,  
Samuel French and  
Tams-Whitmark, plus  
dozens of new signings  
each year.

### GOLD PARTNER

**john good**  
the art of print

John Good Limited  
johngood.com

John Good is a  
publisher/printer  
founded in the 1980s to  
produce programmes  
and print to the arts  
industry, becoming the  
leading publisher in the  
field.

### GOLD PARTNER

**Nick Hern Books**  
Theatre publishers & performing rights agents

Nick Hern Books  
nickhernbooks.co.uk

With over 1,600 plays  
in our catalogue, from  
exciting new drama to  
popular classics and  
literary adaptations,  
there's something for  
every group, school or  
youth group to perform.

### GOLD PARTNER

**pml**

Printed Music Licensing  
Ltd  
pml.org.uk

PML represents  
the rights of music  
publishers. On their  
behalf, PML issues  
licences to allow the  
photocopying and  
arranging of sheet  
music as part of  
education and beyond.

### GOLD PARTNER

**TRW**  
Theatrical Rights Worldwide

Theatrical Rights  
Worldwide  
theatricalrights.com

Theatrical Rights  
Worldwide are the  
agents for *Spamalot*,  
*Grease*, *All Shook Up*,  
*The Addams Family* and  
many more, including  
the newly launched TRW  
Plays.

### GOLD PARTNER

**THEATRICAL**  
ADVENTURES

Theatrical Adventures  
theatricaladventures.com

They are the same  
people who organise  
the G&S Festival and run  
the National G&S Opera  
Company. Offering  
Operetta cruises up the  
rivers of Europe and  
beyond.

### BRONZE PARTNER

**Stagescripts**

Stagescripts Ltd

stagescripts.com

Performance Rights

### BRONZE PARTNER

**THOROUGHLY**  
**THEATRE**

Thoroughly Theatre

thoroughlytheatre.co.uk

Theatre cloths and  
backdrops

### SILVER PARTNER

**Charades**  
Theatrical Costume  
Hire

Charades Theatrical  
Costume Hire  
charades-theatrical.com

Theatrical Costume Hire

### SILVER PARTNER

**STARLIGHT**  
THEATRICAL

Starlight Theatrical

wearestarlight.uk

Event printing and  
technical support

### SILVER PARTNER

**trybooking.com**

Try Booking  
trybooking.com  
Online event ticketing  
platform





**Thomas Lennon**  
District 7

Back in my 'home territory', Part of North London and South-West Hertfordshire, it has been a slow start to the new season, as is usual within the District for our 6 affiliated societies.

The first offering for 2025 / 2026 in late March was from Mill Hill Musical Theatre Company who presented Young At Heart, their Patrons Party 2025.

Following on their heels in April, our 2024 District & Regional Youngstars Award winners, Wonder Theatre Training

Academy, held their production of Annie JR.

Into May and we have the following productions to enjoy; Garden Suburb Theatre - An Ideal Husband  
ELODS - Anything Goes

More detailed information on all the productions outlined above is available on the respective society platforms.

Before we know it, June will be knocking on the door, as opposed to 'busting out all

over', and we will have our annual NODA London AGM & Celebration Day, which takes place on Sunday 22 June 2025, to look forward to. For further information;

<https://www.noda.org.uk/regions/london/agm-and-celebration-day-2025>

In the meantime, if anyone from within the Districts has any concerns or queries, please do contact me at your convenience at the usual e-mail address - [thomas.lennon@noda.org.uk](mailto:thomas.lennon@noda.org.uk).

Musical Theatre presented an entertaining "Annie". It is always a fun show and this was no exception. It is reassuring to see enthusiastic youngsters eagerly performing which suggests that they may continue taking part in amateur theatre for many years to come. Later in February we were treated to the acerbic wit of Alan Bennett when East Lane Theatre Club presented two very enjoyable monologues - "A Chip in the Sugar" and "A Lady of Letters" - and a one act play "Say Something Happened". All cleverly performed. Shortly after this I saw Harrow Opera Workshop's wonderful

production of "The Marriage of Figaro" with many first class performances of many very famous arias, beautifully sung. My next viewing for District 9 was early in April when I attended Pump House Theatre Company's production of the 80s/90s hit classic "Bouncers" by John Godber. A very talented quartet performed this play as originally intended with minimal set and little costume changes despite the four men playing multiple roles. This play remains very popular with today's audience.

May is quite busy for District 9 also with another production by

East Lane who will be presenting "The Revlon Girl" at the beginning of May. (This company are still performing despite the threat of closure by Brent Council hanging over their heads.) Later in May - the 24th and again on 7th June - WOS Productions are presenting another Music Hall production "I Say, I Say" but with a more modern slant this time, I understand. Finally The Chameleons have commenced rehearsals for their dramatic production "A Few Good Men" which will play at Compass Theatre in July (17th -19th)



**Carole Baynes**  
District 8 & 9

The end of panto season in District 8 was marked by Arrow Players performing their delightful 'home-grown' production "The Woman Who Lived in a Shoe" - full of famous pantomime characters in trouble and all sorted out by 'The (clever) Woman' and her trusty cat. Argosy Players also performed their pantomime in January - their's being a modern take on the classic story "Sleeping Beauty". Both most entertaining. March was a quiet month for District 8 - all madly rehearsing, no doubt, for their April/May productions apart, that is, from Proscenium who gave us a brilliant performance of "Death of a Salesman" at

Compass Theatre in Ickenham. Done in minimalist style with a set created almost entirely by suitcases. This was very effective and the acting was first class - Miller at his best.

May is a very busy month in District 8 with five performances and it would appear that this is the month for light-hearted productions. On the agenda is Arrow Players with "As Time Ghosts By"(8th-10th), Ruislip Dramatic Society with "Outside Edge" (14th-17th), ROS Musical Theatre with "9 to 5 The Musical" (14th -17th), and at the end of the month Harefield Amateur Dramatic Society with "Trivial Pursuits"(29th-31st). In contrast

Rickmansworth Players will be performing the inventive, magical, musical play "Big Fish" (6th-10th) based on the novel by D. Wallace which tells of a man's journey through life recalled with his son in order for him to share his father's experiences - a particularly poignant story as the man is terminally ill. I await this with great interest.

#### District 9

Panto season for District 9 ended in December with The Chameleons delightful version of Cinderella and as usual January was quiet - everyone enjoying rehearsals no doubt. Early in February KLOS



**Iain Fowles**  
District 10

Iain Fowles  
District 10  
Well Spring certainly seems to have sprung with the weather improving, and my NODA diary filling up with all of your amazing Spring productions. Unusually I've only seen a couple of shows since my last article - A wonderful version of Everybody's Talking About Jamie and an equally entertaining, Curtains. It seems that with Easter being later than usual, more shows are happening in May - I'm looking forward to 'Rules of Engagement' by Abbots Langley Players, 'Adams Family' by Potters Bar Theatre Company, 'Chorus Line' by St Albans Musical Theatre Company and finally 'Carousel' by Green Room.

You will have no doubt seen that the District Award winners have been announced. For those that

may have missed this, here's a run down of the winners in District 10 overleaf.

Many congratulations to all of the District Winners. All of these winners now go forward to the Regional Awards to award the overall winner. These winners will be announced, as usual, at the NODA London AGM and Celebration Day. This year this will be on the 22nd June 2025, once again at the Radlett Centre. Once tickets go on sale, I'll of course let everyone know. You will notice that Hemel Hempstead Theatre Company (HHTC) this year have won two awards - you may know that I am chairman of HHTC and therefore I'm unable to report on, or be involved in the award nominations. These two nominations were made by Judith Watsham and our very

own Pam Armstrong. There is certainly no favouritism.

Talking of celebrations, you will have seen in my last article that my own society are celebrating 100 years this year. I also need to pass on my huge congratulations to Kings Langley Players, who also reach this milestone this year.

It has been very disappointing over the last few months to hear of societies forced to cancel productions due to casting problems. If your society finds yourself in this difficult situation, please do reach out - you never know who I know that might be able to help you. We may belong to different companies, but were all here to enjoy providing and taking part in quality theatre for our communities.

That's all from me for now. I look forward to seeing many of you in the coming months. If there is anything that I can help with, information, audition support,

finding actors – please do get in touch [ian.fowles@noda.org.uk](mailto:ian.fowles@noda.org.uk)

Look forward to seeing you all in 2025!

Award	Society	Production	Performer/ member	Role
Joe Putnam Award For Best Musical	Green Room	Beautiful – The Carole King Musical		
Kathleen Oyler Award Best Chorus Work	St Albans Musical Theatre Company	On the town		
Molly Harle Award Best Female Character In A Musical	Green Room	Beautiful – The Carole King Musical	Caroline Fitch	Carole King
Ken Wirdnam Award Best Male Character In A Musical	Green Room	Beautiful – The Carole King Musical	Chris Andrews	Gerry Goffin
Sybil Conway Award Best Female Character In A Play	Kings Langley Players	Little Voice	Leanne Allen	Little Voice
Charles Sumner Award Best Male Character In A Play	Hemel Hempstead Theatre Company	Allo, 'Allo	Michael Butcher	Rene
Pat Redhead Drama Award	Abbotts Langley Players	The Regina Monologues		
Harvey Kesselman Comedy Award Comedy Performance In A Play Or Musical	Belmont Theatre Company	The 39 Steps	Ben Morris	Clown 1
Innovation Award	St Albans Musical Theatre Company	Spring Awakening		
Constance Power Trophy Of Encouragement	Elstree Productions			
Shinfield Players Scenic Award (You May Have More Than One Nomination)	Hemel Hempstead Theatre Company	Allo, 'Allo		



**Judith Watsham**  
District 11 & 11a

I have seen some really excellent shows, both in my own and in neighbouring Districts when I covered for fellow reps Panda Players' version of 'Annie' deserves a mention as it was an excellent production as does Tring Youth Theatre Project's knockout 'Into the Woods' – this latter group could give adult groups a run for their money too. Their approach to performing is always extremely professional too. It was nice to visit one of NODA's newest members, Berkhamsted Youth Theatre, for their version of 101 Dalmatians, which was well acted, sung and performed.

I was invited to only five pantomimes this year as some groups chose to put on a light hearted play instead, but nearly all those I saw were true to panto tradition with cross dressing Principal Boys and Dames; a 'goodie' and a 'baddie'; audience participation and, of course, multiple happy endings. As usual, I know there are NODA Member Groups in Buckinghamshire and just into Hertfordshire (primarily the area along the border between the two) – the area covered by Districts 11 and 11A – who toil diligently to provide their audiences with entertainment

but who do not want to invite me to report on their productions. Please remember that if I see an excellent show it is quite likely that it will win a District Award in its category. Having been invited to present winners' certificates to Societies who were unable to attend our London Awards and Celebration Day. I know how much these are appreciated by their recipients. Congratulations to all District Winners these are currently being judged to find the Regional Winners which will be announced at this year's AGM and Celebration Day on 22nd June at The Radlett Centre.



**Andrew Walter**  
District 12

In amateur theatre the winter months are panto season, and this year District 12 raised the bar in both quantity and quality. There was something for everyone – from the annual extravaganzas in Faringdon, Thame and Wallingford, to the Wootton Players' inclusive production in their local community centre. Even Oxford Operatic Society staged "Cinderella" at the New Theatre in January, although this was of course the somewhat neglected Rodgers and Hammerstein version of the classic tale. If you're going "cold turkey" over pantomimes – see what I did there? – then not to worry: Avocet Theatre Company will be bringing their version of

"Cinderella" to the Wykham Theatre stage in Banbury in May! While thinking of Oxford Operatic Society, I was sorry to learn of the death of Ann Southwell last summer. Ann was a member of Oxford Operatic Society for over 50 years and served on committee as Treasurer, Secretary, Chair and latterly was appointed Vice-President; indeed, she was Chair when I first joined the Society in 1987. She was a great supporter of young members and was always encouraging and positive. She will be greatly missed in many ways, not least for her wisdom and counsel. In the last couple of months, I have been lucky enough to see a couple of small cast,

single set plays – the Thame Players' production of Alan Ayckbourn's "Life And Beth", and the Sinodun Players' staging of Richard Everett's "Entertaining Angels". Both plays revolve around women who have been recently widowed, and their families' well-meaning if sometimes misguided efforts to help them through challenging times. Most curiously of all, both plays feature the women's recently departed husbands returning in spiritual form to play a full part in the drama. It was fascinating to see how the two companies approached these similar yet contrasting plays, with their distinctive blends of observation, humour and reflection. What's more, I



will have a further opportunity to make comparisons when Faringdon Dramatic Society performs "Entertaining Angels" in the wonderful Buscot House Theatre in May. Several other Dramatic Societies will be staging plays that month, including the Thame Players' production of Bob Larbey's "Sand Castles", the Sinodun Players' presentation of Margaret Atwood's "The Penelopiad", and the Bartholomew Players' production of Noel Coward's "Present Laughter", marking the Players' 50th anniversary, and a particularly apposite choice as the Players' very first show was Coward's "Blithe Spirit". There is a separate article about the Bartholomew Players' first fifty years in this edition of "Curtain Up". Before then, three of the District's

most accomplished Musical Theatre societies will be staging modern musicals in the same week. Abingdon Operatic Society is bringing "Charlie and the Chocolate Factory" to the Amey Theatre stage in Abingdon from 8th April, Banbury Operatic Society's presentation of "Made in Dagenham" opens at the Wykham Theatre in Banbury the following day, and that same evening sees the first performance of the Musical Youth Company of Oxford's production of "Everybody's Talking About Jamie" at the Oxford Playhouse. Youth Theatre in the District remains as strong as ever: the junior section of Odyssey Theatrical Productions produced an accomplished presentation of "Beauty and the Beast Jr" in just a week during February half

term, and the youth section of OTP and the Youth of Banbury Operatic Society (YOBOS) will be attempting something similar with their productions of "Charlie and the Chocolate Factory" and "Les Miserables" in the summer. Finally, I was recently invited to report on Banbury Cross Players' presentation of "Inspector Drake and the Perfekt Crime", a comedy whodunnit by David Tristram. I have to admit that I had never heard of either Mr Tristram or his play, but it turned out to be a glorious send-up of the mannered murder mysteries exemplified by the works of Agatha Christie, and was hilarious from start to finish. It's a privilege to report on the wonderful and often surprising shows you are all staging across our District.

show had to stop after the first act. I was lucky to see the rest of it on a video recording and I commend all of the production team and cast on managing the situation brilliantly and returning in the evening for another performance. My final pantomime was 'Treasure Island' which was brought to the stage by KATS and was another very entertaining show full of all the ingredients necessary for a good panto.

So far in March, I have seen three plays, two of which were theatre supper performances where I not only enjoyed good theatre, but I was also treated to two delicious dinners! First up

was 'Always Listen To your Nose' a home written play which was a sequel to a play that I had previously seen. It was a very enjoyable who-done-it and I'm glad to say that with some fairly clever sleuthing, my party solved the murder! That was followed 'Keeping Up Appearances' and my second theatre dinner. This was HAODS' latest performance of a play adaptation of a British sitcom and was very well done. It is easy when performing such well known characters to copy the original, but the cast cleverly made them recognizable whilst making them their own. My third play was 'and excellent performance of Absent Friends' by Henley Players which was a

travel back in time to the 1970's and a study of a tensions and inter-relations within a group of friends. The group brought out all the stresses between the characters whilst delivering the humour in the script. March has been a busy month for me and by the time you read this, I will have seen my final two shows for the month: Sister Act JR by Newbury Youngstars and Our House by Starmaker.

District 13 continues to be very active in theatre productions and I am so lucky to be able to enjoy so many of them, thank you!



**Cate Naylor**  
District 13

Since my last report at the beginning of November, District 13 has kept me busy with a huge variety of plays, musicals, pantomimes and youth group productions. It is always a joy to visit societies and to see the talent that we have in the district.

I saw four more productions in November, starting with a tremendous production of 'The Curious Incident of the Dog in the Night-time' from Progress Theatre. The society had put a lot of effort into understanding autism and sensory overload making the show very realistic. This was followed by a completely different production, as I was transported by HAODS to Baltimore and immersed in the feel-good musical that is 'Hairspray'. All the cast performed with their hearts and brought an energetic and exciting show fully of excellent

singing and dancing. My first youth group production of the season was 'Best of British' from Wargrave Youth, a compilation production of sketches and musical numbers from British sitcoms and artists. This was such fun! At the end of the month, I saw a production of 'Boeing Boeing' by new district 13 members: New Era Players. This was a fast-paced romp through a hilariously funny farce brilliantly performed by the group.

December was a quiet month with just two productions. First the G&S operetta 'Patience' performed by WLOS. This was a very entertaining show full of puns, word play and social commentary on the aesthetic craze of the 19th century and well performed by the group. This was followed by 'Screwed' a modern adaptation of A

Christmas Carol by Dickens performed by Progress Youth. It focussed on the struggles that many people face which are often heightened at Christmas and was a very thought-provoking production.

January and February took me into the world of pantomime. 'Buttons' Dream by Twyford Drama was a self-penned pantomime where the principal girls revolted and turned 'pantoland' on its head. It was a fresh look at the pantomime genre and was very entertaining. 'Robinson Crusoe' and the Pirates from Wargrave Theatre was a brilliant production full of excellent performances, with vibrant costumes and set. On the afternoon that I saw the Kintbury St Mary's Drama Group Pantomime Sleeping Beauty; unfortunately, a member of the audience was taken ill and the



**Charlotte Gouldsmith-Leigh**  
District 14

I am absolutely thrilled to start my new role as a regional representative for NODA. My journey in amateur theatre has been extensive, and I am excited to bring the skills and experiences I have gained over the years to this new position. As someone who has managed a society for five years, I have been actively involved in directing and producing countless shows, as well as tackling the inner workings and challenges of running a society. My love for theatre began at a

young age and continued to grow as I pursued my studies in the subject to a high standard. This combination of academic achievement and hands-on experience has equipped me with a comprehensive understanding of both the performance aspects and the community-driven elements of theatre. As I step into my new role with NODA, I am eager to work closely with the various societies and contribute to the growth and enrichment of our vibrant

amateur theatre community. I believe that a strong sense of community is crucial to the success of any artistic endeavor, and I am committed to fostering connections and supporting the societies that make up our network. I look forward to this exciting new chapter in my life and the opportunity to make a lasting impact on the amateur theatre landscape.



## Hosting a show visit from your regional representative

It is standard practice, and a member benefit, for NODA affiliated societies to invite their Regional Representative, to attend their productions, for the purpose of writing a show report.

Ideally, invitations should be issued by the Society Secretary, and it is customary to offer two tickets for the production to a performance of the Regional Representative's choosing, remembering that they may have other productions to attend during the same period.

On the agreed attendance, it is suggested that a member of the committee be available

1. To greet him / her on their arrival,
2. To ensure he / she is provided with a copy of the programme to assist them in preparing their show report,

3. To be available (if possible) to host him / her during the interval and to arrange that he / she be offered some refreshments, (The purpose for this is to allow time for networking and a general chit-chat - perhaps about production matters, rights-holder concerns, costume or set issues, or possible changes in the administration of the society. It is also an opportunity for the designated individual to raise any questions concerning the service being provided by NODA.)
4. Finally, to say farewell and to escort him / her off the premises.

Additionally, Regional Representatives are generally open to requests to visit backstage to speak with the cast

after the production.

Following completion of their show report, the Regional Representative will e-mail a copy to the Society Secretary, copying this to the Regional Councillor as well. The website production summary will then be uploaded shortly thereafter, usually within 48 hours.

Regional Representatives also welcome invitations to other functions, such as your AGM, general celebratory events or workshops.

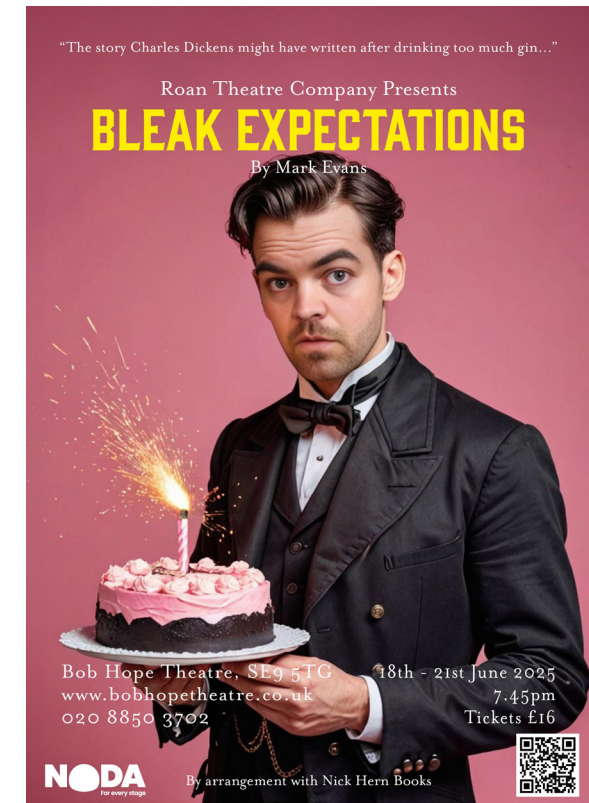
If you have any other queries pertaining to event or production attendances, please contact your Regional Representative in the first instance.

## "The story Charles Dickens might have written after drinking too much gin..."

Follow half-orphan Pip's extraordinary exploits with sisters Pippa and Poppy and best friend Harry Biscuit, as they attempt to escape the calculating clutches of the dastardly Mr Gently Benevolent, defeat the hideous Hardthrasher siblings, and deflect disaster at every turn! Will evil be vanquished by virtue? Can love triumph over hate?

Based on the award-winning BBC Radio 4 series, Bleak Expectations is a hilarious, chaotic caper, featuring dastardly villains, preposterous names, pulse-quickening romances, heart-rending death scenes, and definitely, probably, hopefully a happy ending. It is playing at the Bob Hope Theatre, Eltham 18-21 June.

Teresa Wilkins - Secretary RTC



## Situations vacant within NODA London

### HAVE A FLAIR FOR ADMIN?

Want to be involved with NODA? We are looking for a person to take on the role of Secretary for our London Regional Committee. As well as taking minutes at the regional meetings you would also be involved in the organisation of our annual Regional Day. If the role appeals to you then please contact: Pam Armstrong - London Regional Councillor - pam.armstrong@noda.org.uk

### HAVE A FEEL FOR FIGURES?

We are looking for a person to take on the role of Regional Treasurer and report to Head Office on a monthly basis. If you have a good feel for figures and can find your way around a spreadsheet, then please contact: Pam Armstrong - London Regional Councillor - pam.armstrong@noda.org.uk

### REGIONAL YOUTH CO-ORDINATOR

Are you passionate about the future of amateur theatre and want to encourage young people to be involved and develop their talents and life skills? Then this is a role that will suit you. Our Youth Co-ordinator is stepping down after many years in the post, and we are looking for someone to continue in this important position. This is a vital part of NODA's future and is both absorbing and interesting, covering the whole of the London Region.

If you are interested, please contact Pam Armstrong - London Regional Councillor - pam.armstrong@noda.org.uk

## NODA London AGM 22nd June 2025

On behalf of the London Regional Committee, I invite you to the NODA London Regional AGM and Celebration Day.

It has been an enthralling twelve months with a surge of activity in the Region with so very many Societies taking to the stage and delighting their audiences with imaginative and spectacular productions. What a pleasure it has been to attend shows and celebrations and appreciate the wonderful talent that abounds in the London Region.

The regular business of NODA London continues and we will be holding our Celebration Day events on

### Sunday 22nd June 2025 commencing at 11.00 am

The day will encompass our Celebratory Showcasing Events, our AGM to receive reports and elect Regional Representatives, together with our all-important Regional Awards

On our website you will find Nomination Papers for Regional Representatives and the Regional Councillor should you wish to nominate anyone other than the present incumbents.

As with last year, an AGM brochure will be published on the London section of the NODA website and will include the AGM papers. The brochure gives details of the Region's accounts for 2024, the list of Regional Reps who are standing again for the coming year and reports on membership and long service awards.

May I, on your behalf, take the opportunity to thank the Regional Committee, Officers and Reps. They do tremendous, voluntary work to ensure NODA in the London region runs smoothly and well deserve our most heartfelt and sincere thanks.

Pam Armstrong  
Regional Councillor



## The Bartholomew Players celebrate their 50th Birthday



Local Amateur Dramatics Groups are sometimes regarded as unprofessional and low key, but when you get feedback from audiences such as “Why bother going to the West End when you can see equally professional, outstanding performances from The Bartholomew Players in Eynsham”, it makes you think that you are doing something right!

The Bartholomew Players were founded in 1975 and this year celebrate 50 years of bringing high quality live theatre to the local community. Originally led by the teachers at the Bartholomew School, Eynsham, this is where the group’s name originated and where performances were first staged. Immediately, the group undertook to put on high quality plays by known authors, starting with Noël Coward’s *Blithe Spirit*, and have continued in this vein with 2 productions per year, every May and November.



Bedroom Farce 1992

Very soon, the audiences for Bartholomew Players productions outgrew the capacity of the School Hall and in 2001, they moved to the bespoke facilities provided by the new Eynsham Village Hall. Successful Community Funding bids and high audience numbers have enabled reinvestment of funds allowing the stage to be equipped and improved with curtains, lighting and sound systems that keep us as up to date as funding and space allows.

More recently, the group have been honoured with the patronage of well-known TV playwrights Laurence Marks and Maurice Gran (successes include *Birds of a Feather*, *Goodnight Sweetheart* and *Shine on Harvey Moon*) who allowed Bartholomew Players to be the first amateur group to stage their play *Von Ribbentrop’s Watch*. They were so impressed by the professionalism of the group that not only did they give their patronage, but they hosted a special evening of a Fireside Chat regaling their TV show antics and also co-directed May 2024’s production of *Pack of Lies*, to great critical acclaim.

The Bartholomew Players members range in age from 18 to 84 years and come from all walks of life – academics from a variety of disciplines, market researcher, engineer, scientists, full-time mums, teachers – and bring a hugely wide set of skills to the group in addition to acting – painting, dressmaking, scenery construction, public relations, hair, make-up to name just a few. Steve Ashcroft was one of the original members of The Bartholomew Players, all those years ago, and is still very active in the group today, despite living in Sweden for 6 months of the

year!

We always welcome new members since we believe that variety is the spice of life and new blood means new energy and skills in the group. If you’d like to get involved with a dynamic, friendly group where you can learn new skills and achieve potential you never even knew you had – either in an acting or stage support role – then come and join The Bartholomew Players.

Our next production is *Present Laughter* from May 14th – 17th 2025, one of Noël Coward’s best comedies – and a personal favourite of his – involving misunderstandings, extramarital affairs and complicated relationships – a suitably upbeat play to help us celebrate our 50th Birthday! Contact Denise Santilli, Publicity Officer at bart.players@gmail.com for more information.



Present Laughter in rehearsal

## Twyford Drama – a dream of a production



Twyford Drama, in District L13, have had a busy few months! They were recently voted Twyford’s Community Group of the Year at the Twyford Together awards and are currently in rehearsal for *Blithe Spirit* by Noël Coward, directed by Beth Reynolds.

In January they presented *Buttons’ Dream* – a new pantomime. Writer and director Emma Cianchi, writes about her experiences:

When I first volunteered to write and direct this year’s pantomime for Twyford Drama way back in late 2022, I’d only just dreamt up the idea of *Buttons’ Dream*. January 2025 seemed a world away – plenty of time to write a script from scratch; assemble a production team; create a set, costumes and props; organise sound and lighting; cast the parts; rehearse and be ready and raring to perform to our appreciative audiences. However, of course, despite my best intentions to complete the script quickly, things didn’t quite go according to plan, and life – as it has a habit of doing – got in the way. With the majority of 2023 taken over with the house buying and selling process alongside wedding preparations – it was a big year for me! –

much less writing got done than I’d hoped, so I came into 2024 with a script that was a long way off finished. Thus followed a lot of late nights writing and editing until April, when I finally had a full first draft.

Over the following months, as I continued tweaking my script, I started getting my excellent behind the scenes team on board, who jumped into creative mode and began sourcing sound effects, choreographing dances, planning out the set design, thinking about costumes, and so on and so forth. But the real work didn’t fully kick into action until mid-October. In the space of just three months, *Buttons’ Dream* went from a script to a show: auditions were held, the parts were cast, scenes

were rehearsed, lines were learnt, songs and dances were practised, the set was built and painted, props were gathered and made, costumes were sewn, sound clips were edited and the lighting was planned. In summary: a lot of hard work and a lot of energy were put in by all involved.

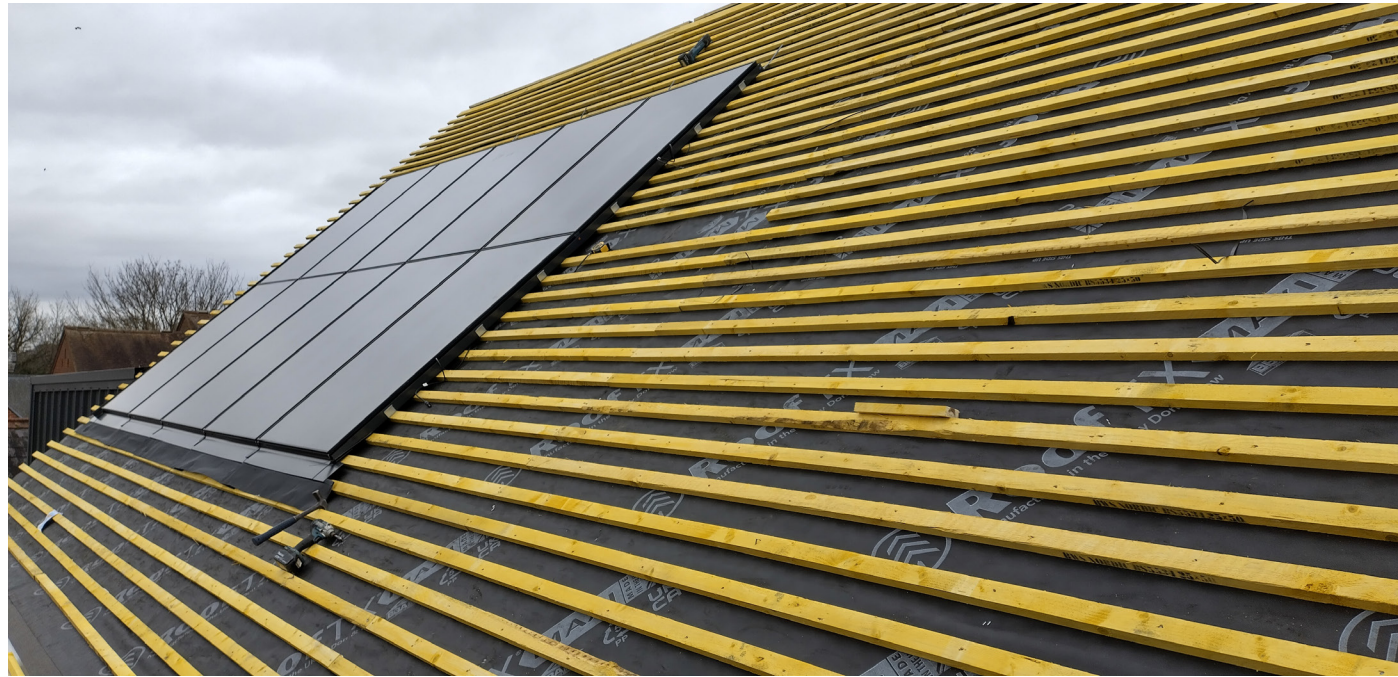
With one week to go, we were busy putting the finishing touches to the pantomime, focusing in rehearsals on the little details and upping the pace. The Loddon Hall stage was transformed into Pantoland as our set was erected. This was followed by our technical rehearsal and our dress at which point the pantomime fully transferred ownership from me to the cast and crew and I took a step back to enjoy watching all their hard work – and mine – come to fruition.

Suffice to say, *Buttons’ Dream* has evolved dramatically over this whole journey and seeing my script gradually brought to life over the past few months has been a real honour. I am immensely proud of the whole *Buttons’ Dream* team for all the hard work and creativity they have put into this pantomime. I can’t wait to see the finished show next week and I only hope our audiences enjoy watching it as much as I will.





## Solar Panels Reduce Energy Costs at the Players Theatre, Thame



By Helen Johns

Thame Players Theatre Company is an amdram company which owns the Players Theatre, a former church hall dating from 1913. Having owned it since 1997, we converted it into a modern theatre in 2002. We have always tried to adopt sustainable practices, and, in recent times, our environmental journey has been assisted by an organisation called Low Carbon Hub, working in partnership with the Environmental Information Exchange at Oxford Brookes University. They visited the theatre in 2023 and produced a Carbon Reduction Recommendations Report, which was funded by Thame Town Council.

One of the main recommendations in the report was that we should install solar panels on the theatre roof, in order to efficiently store energy produced by the sun and reduce energy costs. This is part of our overall journey towards making the theatre more energy-efficient and more

environmentally friendly.

Installing solar panels is an expensive project. Following a twelve-month period during which grant funders were sourced and funding obtained, the project was completed in February this year and took a mere four weeks. The funders were: the Rural England Prosperity Fund (REPF), a government-backed scheme funding capital projects for small businesses and community infrastructure, with the aim of improving productivity and strengthening the rural economy and rural communities; the Westmill Solar Cooperative, consisting of over 1,500 members who are passionate about the future of community renewable energy, combatting climate change by financing a reliable source of renewable energy, and helping the local area transition to a low-carbon future economy; Oxfordshire County Council's Councillor Priority Fund, whose aim is to support councillor priorities in their local areas; and South Oxfordshire District Council's Councillor Community Fund, which makes awards to

projects or services that offer community benefits such as promoting action on the climate emergency.

Once all the funding was obtained, using quotations from specialist local suppliers, the work could begin. It involved erecting scaffolding, stripping off the tiles on the south-west facing roof, installing 26 solar panels in two rows, and replacing the surrounding roof tiles. As the final element, a battery and inverter were installed.

Electricity is a major cost for all theatres, due to the ongoing need for show lighting and heating, and the solar panels will produce a sizeable reduction in our electricity costs over the next few years. As the Players Theatre is an evening venue, like most theatres, the solar battery converts and stores energy produced by the solar panels by day for later use, offsetting the need for grid-supplied power. This will lead to lower electricity bills and reduced carbon emissions.

As a result, the Players Theatre will no longer continue to be at the mercy of external suppliers and escalating costs in an uncertain world. Obtaining energy from the sun, a plentiful source of free energy, opens the door to a more stable energy future without price fluctuations. The solar panels also mean the theatre's carbon footprint will be reduced due to the much greener production of energy, enhancing sustainability. Electricity generated from solar panels does not produce greenhouse gases and this helps to reduce the effects of climate change.

Mike Rochford, Chair of Thame Players, said, 'We are conscious that, as one of Thame's assets, we need to be responsible custodians, showing our audiences and the wider community that we are an environmentally responsible organisation which cares about our community's future and that of the planet. This has been quite a journey but, before long, the theatre will be reaping the environmental and financial benefits from its new energy source, as we work towards reducing our carbon footprint. With lower overheads, the theatre will become more resilient, and we can put savings towards other uses, for example improving our facilities and the audience experience.'

**Further information about the four grant funders can be found at**

<https://www.southoxon.gov.uk/south-oxfordshire-district-council/business-and-economy/advice-for-businesses/rural-england-prosperity-fund/>;

<https://westmillsolar.coop/>; <https://www.southoxon.gov.uk/south-oxfordshire-district-council/community-support/grants/councillor-community-grants/>;

<https://www.oxfordshire.gov.uk/residents/communities/councillor-priority-fund>.





What’s On In The London Region

You may submit show listings for inclusion at any time

There is always a lot going on in the London region. Make sure that your next show is listed. You may send your show listing as long in advance as you like. It will be listed on the London section of the NODA website immediately, and in the next issue of Curtain Up. Listings also appear on the NODA London Facebook page, between 6 and 8 weeks before show date.

- Please include:
- Venue, including postcode
  - Dates
  - Society Name
  - Box Office Number (if applicable)
  - Website

Please give an indication of the type of show eg. Musical, play, panto etc. Your society must be a paid up member of NODA in the London region. Send submissions to paul.holgate@noda.org.uk

COMPANY 08 May 25 – 11 May 25 Croydon Operatic & Dramatic Association (CODA) Selsdon Hall CR2 8LA <a href="https://codashows.co.uk/product/company">https://codashows.co.uk/product/company</a>	ROCK OF AGES 13 May 25 – 17 May 25 East Berkshire Operatic Society (EBOS) Wilde Theatre RG12 7PA Box Office: 01344 484123 <a href="https://shorturl.at/pGgrl">https://shorturl.at/pGgrl</a>
HAIRSPRAY 07 May 25 – 17 May 25 Stock Exchange Dramatic and Operatic Society (SEDOS) Bridewell Theatre EC4Y 8EQ <a href="https://shorturl.at/gFaQi">https://shorturl.at/gFaQi</a>	ENTERTAINING ANGELS by Richard Everett 14 May 25 – 17 May 25 Faringdon Dramatic Society Buscot Park Theatre BN7 8BU <a href="http://www.faringdondramatic.org.uk/">www.faringdondramatic.org.uk/</a>
JANE AUSTEN’S EMMA adapted by Michael Bloom 08 May 25 – 17 May 25 Quince Players Cordes Hall SL5 9NE <a href="http://www.ticketsource.co.uk/quinceplayers">www.ticketsource.co.uk/quinceplayers</a>	A BUNCH OF AMATEURS by Ian Hislop and Nick Newman 14 May 25 – 17 May 25 Cygnet Players St Barnabas Church Southfields SW18 5EP <a href="https://cygnetplayers.com/tickets/">https://cygnetplayers.com/tickets/</a>
ANYTHING GOES 13 May 25 – 17 May 25 ELODS Wyllyotts Theatre EN6 2HN Box Office: 01707 645005 <a href="http://www.elods.org.uk/">www.elods.org.uk/</a>	OUTSIDE EDGE by Richard Harris 14 May 25 – 17 May 25 Ruislip Dramatic Society Compass Theatre UB10 8PD <a href="https://shorturl.at/Rw6nd">https://shorturl.at/Rw6nd</a>
RICHARD III by William Shakespeare 13 May 25 – 17 May 25 Carlton Theatre Group Studio at New Wimbledon Theatre SW19 1QG <a href="https://shorturl.at/mNVtS">https://shorturl.at/mNVtS</a>	9 TO 5 THE MUSICAL 14 May 25 – 17 May 25 ROS Musical Theatre Winston Churchill Theatre HA4 7QL <a href="http://www.rosmusicaltheatre.co.uk/9to5">www.rosmusicaltheatre.co.uk/9to5</a>

DISNEY’S BEAUTY AND THE BEAST 14 May 25 – 17 May 25 GLOC Musical Theatre Questors Theatre W5 5BQ <a href="http://www.glocmt.co.uk/whats-on">www.glocmt.co.uk/whats-on</a>	MONTY PYTHON’S SPAMALOT 14 May 25 – 17 May 25 Chesham Musical Theatre Company Elgiva Theatre HP5 1HR Box Office: 01494 582900 <a href="https://shorturl.at/U5Pai">https://shorturl.at/U5Pai</a>
PRESENT LAUGHTER by Noël Coward 14 May 25 – 17 May 25 Bartholomew Players Eynsham Village Hall OX29 4QW <a href="https://shorturl.at/YrzNs">https://shorturl.at/YrzNs</a>	SHREK THE MUSICAL 14 May 25 – 17 May 25 Sainsbury Singers Hexagon Theatre RG1 7QF <a href="https://rb.gy/lia29l">https://rb.gy/lia29l</a>
PAGE TO STAGE a showcase of new work 14 May 25 – 17 May 25 Chingford Amateur Dramatic & Operatic Society (CADOS) Mornington Hall E4 7ER Box Office: 07445 650935 <a href="http://www.ticketsource.co.uk/cadoschingford">www.ticketsource.co.uk/cadoschingford</a>	

A BUNCH OF AMATEURS  
by Ian Hislop and Nick Newman  
15 May 25 – 17 May 25  
Woodcote Amateur Dramatic Society (WADS)  
Woodcote Village Hall RG8 0QY  
<https://woodcotedrama.co.uk/>

THE 39 STEPS  
adapted by Patrick Barlow  
15 May 25 – 17 May 25  
St Faith’s Players  
Brentford School for Girls Drama Studio TW8 0PF  
<https://shorturl.at/JyIKS>

CAUGHT IN THE NET  
by Ray Cooney  
15 May 25 – 17 May 25  
Kings Langley Players  
Theatre @ The Nap WD4 8ET  
<https://kip.org.uk/>

SHREK THE MUSICAL  
15 May 25 – 17 May 25  
Woodmansterne Operatic & Dramatic Society  
St Peters Church Hall SM7 3NR  
Box Office: 07849 762294  
[www.ticketsource.co.uk/wods](http://www.ticketsource.co.uk/wods)

THE GHOST TRAIN (REVISED)  
by Arnold Ridley  
15 May 25 – 17 May 25  
Parish Players  
St Marys Parish Hall Wimbledon SW19 3HJ  
[www.parishplayers.net/ghost-train](http://www.parishplayers.net/ghost-train)

THE SCHOOL FOR WIVES  
by Molière  
15 May 25 – 17 May 25  
Magdalene Players  
St Mary Magdalene Church Hall SW17 7HP  
[www.ticketsource.co.uk/magdaleneplayers](http://www.ticketsource.co.uk/magdaleneplayers)

MURDER ON THE OCEAN PRINCESS  
murder mystery evening  
17 May 25  
Quaintwood Players  
Grendon Underwood Village Hall HP18 0SR  
[www.quaintwoodplayers.co.uk/](http://www.quaintwoodplayers.co.uk/)

DISNEY’S THE LITTLE MERMAID  
13 May 25 – 18 May 25  
Erith Operatic Society  
Erith Playhouse DA8 1QY  
[www.ticketsource.co.uk/eos](http://www.ticketsource.co.uk/eos)

COMPANY  
15 May 25 – 18 May 25  
IODS Productions  
Redbridge Drama Centre E18 2RB  
[www.iodsproductions.co.uk/](http://www.iodsproductions.co.uk/)

MURDER ON THE OCEAN PRINCESS  
murder mystery evening  
23 May 25  
Quaintwood Players  
Quainton Memorial Hall HP22 4BW  
[www.quaintwoodplayers.co.uk/](http://www.quaintwoodplayers.co.uk/)

THE PENELOPIAD  
by Margaret Atwood  
20 May 25 – 24 May 25  
Sinodun Players  
Wallingford Corn Exchange OX10 0EG  
<https://shorturl.at/JV6M9>

MONTY PYTHON’S SPAMALOT  
21 May 25 – 24 May 25  
WWOS Musical Theatre  
Churchill Theatre BR1 1HA  
Box Office: 0343 3100020  
<https://shorturl.at/Sc2l8>

A MURDER IS ANNOUCED  
by Agatha Christie  
21 May 25 – 24 May 25  
Tring Theatre Company  
DEMBE Theatre HP23 5QY  
<https://shorturl.at/ljq0p>

FAMILY PLANNING  
by Frank Vickery  
22 May 25 – 24 May 25  
The Priory Players Amateur Theatre Company  
Progress Hall SE9 1SL  
[www.ticketsource.co.uk/theprioryplayers](http://www.ticketsource.co.uk/theprioryplayers)

I SAY! I SAY! I SAY!  
a tribute to Old Time Music Hall  
24 May 25  
WOS Productions  
Ickenham Village Hall UB10 8DG  
<https://wos-productions.weebly.com/>

GREASE  
21 May 25 – 25 May 25  
Henley Amateur Operatic & Dramatic Society (HAODS)  
Kenton Theatre RG9 2BS  
Box Office: 01491 525050  
<https://shorturl.at/CGKwe>

SWEET CHARITY  
27 May 25 – 31 May 25  
Wimbledon Light Opera Society  
John McIntosh Arts Centre SW6 1RX  
[www.wlos.org.uk/tickets](http://www.wlos.org.uk/tickets)

CURTAIN UP  
by Peter Quilter  
28 May 25 – 31 May 25  
Belmont Theatre Company  
Pump House Theatre WD17 2JP  
Box Office: 07917 324179  
<https://shorturl.at/pc2aD>

CINDERELLA  
29 May 25 – 31 May 25  
Avocet Theatre Company  
Wykham Theatre OX16 9HY  
[www.ticketsource.co.uk/atc](http://www.ticketsource.co.uk/atc)

TRIVIAL PURSUITS  
by Frank Vickery  
29 May 25 – 31 May 25  
Harefield Amateur Dramatic Society  
St Marys Harefield Church Hall UB9 6BX  
Box Office: 01895 253346  
[www.harefieldamdram.org/](http://www.harefieldamdram.org/)

ANNIE  
29 May 25 – 01 Jun 25  
Orsi Productions  
Halo Theatre N14 5PP  
Box Office: 07538 757534  
<https://orsiproductions.co.uk/tickets>

SONGS UNDER THE SUMMER SUN  
a toast to love  
31 May 25 – 01 Jun 25  
Mayhem Theatre Company  
Cannizaro Park SW19 4UE  
<https://shorturl.at/4hGxb>

DIXON AND DAUGHTERS  
by Deborah Bruce  
31 May 25 – 07 Jun 25  
Geoffrey Whitworth Theatre  
Geoffrey Whitworth Theatre DA1 4NP  
[www.thegwt.org.uk/whats-on/](http://www.thegwt.org.uk/whats-on/)

VARDY V ROONEY: THE WAGATHA CHRISTIE TRIAL  
by Liv Hennessy  
03 Jun 25 – 07 Jun 25  
Southside Players  
Studio at New Wimbledon Theatre SW19 1QG  
<https://shorturl.at/9jC62>



<p>CONFUSIONS by Alan Ayckbourn 04 Jun 25 – 07 Jun 25 Proscenium Compass Theatre UB10 8PD Box Office: 01895 250 615 <a href="https://shorturl.at/uwhZI">https://shorturl.at/uwhZI</a></p>	<p>TABLE MANNERS by Alan Ayckbourn 11 Jun 25 – 14 Jun 25 Bob Hope Theatre Bob Hope Theatre SE9 5TG Box Office: 020 88503702 <a href="http://www.bobhopetheatre.co.uk/table.html">www.bobhopetheatre.co.uk/table.html</a></p>	<p>‘ALLO ‘ALLO 2: THE CAMEMBERT CAPER by David Lovesy &amp; David Pibworth 26 Jun 25 – 28 Jun 25 Wraysbury Players Wraysbury Village Hall TW19 5NA <a href="http://www.ticketsource.co.uk/wraysburyplayers">www.ticketsource.co.uk/wraysburyplayers</a></p>	<p>SHREK THE MUSICAL 17 Jul 25 – 19 Jul 25 Havering Music Makers Queens Theatre RM11 1QT Box Office: 01708 443333 <a href="https://shorturl.at/CqAPs">https://shorturl.at/CqAPs</a></p>	<p>THE CRUCIBLE by Arthur Miller 16 Sep 25 – 20 Sep 25 Stock Exchange Dramatic and Operatic Society (SEDOS) Bridewell Theatre EC4Y 8EQ <a href="https://shorturl.at/LvsRR">https://shorturl.at/LvsRR</a></p>	<p>AVENUE Q 30 Oct 25 – 01 Nov 25 Chiltern Musical Theatre Players Theatre OX9 2DP <a href="http://www.chilternmusicaltheatre.com/">www.chilternmusicaltheatre.com/</a></p>
<p>AND THEN THERE WERE NONE by Agatha Christie 04 Jun 25 – 07 Jun 25 Shinfield Players Theatre Shinfield Players Theatre RG2 9DF <a href="http://www.shinfieldplayers.org.uk/booktickets">www.shinfieldplayers.org.uk/booktickets</a></p>	<p>ME AND MY GIRL 11 Jun 25 – 14 Jun 25 Woodley Light Operatic Society Kenton Theatre RG9 2BS Box Office: 0333 666 3366 <a href="http://www.wlos.co.uk/">www.wlos.co.uk/</a></p>	<p>ONE MAN, TWO GUVNORS by Richard Bean 28 Jun 25 – 05 Jul 25 Geoffrey Whitworth Theatre Geoffrey Whitworth Theatre DA1 4NP <a href="http://www.thegwt.org.uk/whats-on/">www.thegwt.org.uk/whats-on/</a></p>	<p>A FEW GOOD MEN by Aaron Sorkin 17 Jul 25 – 19 Jul 25 The Chameleons Amateur Dramatic Society Compass Theatre UB10 8PD <a href="https://shorturl.at/zlVIj">https://shorturl.at/zlVIj</a></p>	<p>CLUEDO by Sandy Rustin 17 Sep 25 – 20 Sep 25 Quince Players Cordes Hall SL5 9NE <a href="http://www.ticketsource.co.uk/quinceplayers">www.ticketsource.co.uk/quinceplayers</a></p>	<p>SOME MOTHERS DO ‘AVE ‘EM by Guy Unsworth 03 Nov 25 – 08 Nov 25 Erith Playhouse Erith Playhouse DA8 1QY Box Office: 0333 666 3366 <a href="https://shorturl.at/xF2fk">https://shorturl.at/xF2fk</a></p>
<p>EDUCATING RITA by Willy Russell 04 Jun 25 – 07 Jun 25 Potters Bar Theatre Company Wyllyotts Theatre Studio EN6 2HN Box Office: 01707 645005 <a href="https://shorturl.at/25sux">https://shorturl.at/25sux</a></p>	<p>LADIES’ DAY by Amanda Whittington 12 Jun 25 – 14 Jun 25 Loughton Amateur Dramatic Society (LADS) Lopping Hall IG10 4LF Box Office: 07752 736110 <a href="http://www.lads.org.uk/tickets.htm">www.lads.org.uk/tickets.htm</a></p>	<p>PINOCCHIO a pop up pantomime 05 Jul 25 – 06 Jul 25 Crowthorne Amateur Theatrical Society Morgan Recreation Ground RG45 7LA <a href="http://www.ticketsource.co.uk/crowthornecats">www.ticketsource.co.uk/crowthornecats</a></p>	<p>LADIES DOWN UNDER by Amanda Whittington 16 Jul 25 – 20 Jul 25 Barnes Community Players OSO Arts Centre SW13 0LF <a href="https://shorturl.at/uiQNg">https://shorturl.at/uiQNg</a></p>	<p>ASSASSINS 23 Sep 25 – 27 Sep 25 Stock Exchange Dramatic and Operatic Society (SEDOS) Bridewell Theatre EC4Y 8EQ <a href="https://shorturl.at/R5BI8">https://shorturl.at/R5BI8</a></p>	<p>DREAMGIRLS 19 Nov 25 – 29 Nov 25 Stock Exchange Dramatic and Operatic Society (SEDOS) Bridewell Theatre EC4Y 8EQ <a href="https://shorturl.at/frduU">https://shorturl.at/frduU</a></p>
<p>THAT’S LIFE the “Rat Pack” musical 06 Jun 25 – 07 Jun 25 The Warren Wyllyotts Theatre EN6 2HN Box Office: 01707 645005 <a href="https://thewarren.live/">https://thewarren.live/</a></p>	<p>SISTER ACT 12 Jun 25 – 14 Jun 25 Barking Music and Drama Ripple Centre IG11 7FN <a href="http://www.ticketsource.co.uk/barkingmad">www.ticketsource.co.uk/barkingmad</a></p>	<p>ANNIE 08 Jul 25 – 12 Jul 25 Erith Playhouse Erith Playhouse DA8 1QY Box Office: 0333 666 3366 <a href="https://rb.gy/d5o53q">https://rb.gy/d5o53q</a></p>	<p>ANTONY AND CLEOPATRA by William Shakespeare 23 Jul 25 – 26 Jul 25 Greek Theatre Players Open Air Greek Theatre E17 9RZ Box Office: 07930 603308 <a href="http://www.greektheatreplayers.co.uk/">www.greektheatreplayers.co.uk/</a></p>	<p>MR. BURNS, A POST-ELECTRIC PLAY by Anne Washburn 24 Sep 25 – 27 Sep 25 Bob Hope Theatre Bob Hope Theatre SE9 5TG Box Office: 020 88503702 <a href="http://www.bobhopetheatre.co.uk/burns.html">www.bobhopetheatre.co.uk/burns.html</a></p>	<p>A CHRISTMAS CAROL adapted by Patrick Barlow 01 Dec 25 – 06 Dec 25 Erith Playhouse Erith Playhouse DA8 1QY Box Office: 0333 666 3366 <a href="https://shorturl.at/xF2fk">https://shorturl.at/xF2fk</a></p>
<p>THE MERRY WIVES OF WINDSOR by William Shakespeare 06 Jun 25 – 07 Jun 25 Theydon Bois Drama Society Theydon Bois Village Hall CM16 7ER <a href="https://theydonboisdramasociety.co.uk/">https://theydonboisdramasociety.co.uk/</a></p>	<p>PARADE 12 Jun 25 – 21 Jun 25 Progress Theatre Progress Theatre RG1 5HL <a href="https://progresstheatre.co.uk/">https://progresstheatre.co.uk/</a></p>	<p>CALENDAR GIRLS by Tim Firth 08 Jul 25 – 12 Jul 25 Thame Players Theatre Company Thame Players Theatre OX9 2DP Box Office: 01844 212833 <a href="https://shorturl.at/XgUHi">https://shorturl.at/XgUHi</a></p>	<p>THE WITCHES OF EASTWICK 23 Jul 25 – 26 Jul 25 The Quay Players Greenwood Theatre SE1 3RA <a href="https://quayplayers.org.uk/">https://quayplayers.org.uk/</a></p>	<p>ENCORES (showcase) 09 Oct 25 – 10 Oct 25 Beaconsfield Musical and Operatic Society (BMOS) Curzon Centre HP9 1RG <a href="http://www.ticketsource.co.uk/bmos">www.ticketsource.co.uk/bmos</a></p>	<p>A CHRISTMAS CAROL a new adaptation by Anne Bailey 11 Dec 25 – 13 Dec 25 Kings Langley Players Theatre @ The Nap WD4 8ET <a href="https://klp.org.uk/">https://klp.org.uk/</a></p>
<p>I SAY! I SAY! I SAY! a tribute to Old Time Music Hall 07 Jun 25 WOS Productions Christ Church Community Hall UB8 1SZ <a href="https://wos-productions.weebly.com/">https://wos-productions.weebly.com/</a></p>	<p>BLEAK EXPECTATIONS by Mark Evans 18 Jun 25 – 21 Jun 25 The Roan Theatre Company Bob Hope Theatre SE9 5TG Box Office: 02088 503702 <a href="https://shorturl.at/r3Fzk">https://shorturl.at/r3Fzk</a></p>	<p>PUCK a new play by Hannah O’Donnell 10 Jul 25 – 12 Jul 25 Banbury Cross Players Mill Arts Centre OX16 5QE <a href="https://shorturl.at/L6Vk6">https://shorturl.at/L6Vk6</a></p>	<p>COLD COMFORT FARM adapted by Paul Doust 12 Aug 25 – 16 Aug 25 Carlton Theatre Group Studio at New Wimbledon Theatre SW19 1QG <a href="https://shorturl.at/tv3RN">https://shorturl.at/tv3RN</a></p>	<p>DEAD MAN’S CELL PHONE by Sarah Ruhl 06 Oct 25 – 11 Oct 25 Erith Playhouse Erith Playhouse DA8 1QY Box Office: 0333 666 3366 <a href="https://shorturl.at/xF2fk">https://shorturl.at/xF2fk</a></p>	<p>THE CURIOUS INCIDENT OF THE DOG IN THE NIGHT-TIME adapted by Simon Stephens 12 Mar 26 – 14 Mar 26 Kings Langley Players Theatre @ The Nap WD4 8ET <a href="https://klp.org.uk/">https://klp.org.uk/</a></p>
<p>PLAZA SUITE by Neil Simon 09 Jun 25 – 14 Jun 25 Erith Playhouse Erith Playhouse DA8 1QY Box Office: 0333 666 3366 <a href="https://rb.gy/d5o53q">https://rb.gy/d5o53q</a></p>	<p>SISTER ACT 24 Jun 25 – 28 Jun 25 Hemel Hempstead Theatre Company Boxmoor Playhouse HP1 1NP Box Office: 0333 666 3366 <a href="http://www.hhtheatreco.com/whats-on">www.hhtheatreco.com/whats-on</a></p>	<p>JESUS CHRIST SUPERSTAR 08 Jul 25 – 13 Jul 25 Oxford Operatic Society (OXOPS) Oxford Playhouse OX1 2LW <a href="https://shorturl.at/23AoL">https://shorturl.at/23AoL</a></p>	<p>LES MISÉRABLES – SCHOOL EDITION 15 Aug 25 – 16 Aug 25 Youth of Banbury Operatic Society (YOBOS) Wykham Theatre OX16 9HY <a href="http://www.yobos.co.uk/tickets">www.yobos.co.uk/tickets</a></p>	<p>‘ALLO ‘ALLO 2: THE CAMEMBERT CAPER by David Lovesy &amp; David Pibworth 08 Oct 25 – 11 Oct 25 Eldorado Musical Productions Bob Hope Theatre SE9 5TG Box Office: 02088 503702 <a href="http://www.bobhopetheatre.co.uk/">www.bobhopetheatre.co.uk/</a></p>	<p>THE TURN OF THE SCEW by Ken Whitmore 21 May 26 – 23 May 26 Kings Langley Players Theatre @ The Nap WD4 8ET <a href="https://klp.org.uk/">https://klp.org.uk/</a></p>
	<p><b>When submitting a show listing, why not send a photo for the Facebook page?</b></p>			<p><b>Production or rehearsal photographs are welcome at any time. We use a new photo every week.</b></p>	
	<p><b>Send them to paul.holgate@noda.org.uk</b></p>				

# Thinking of attending this year's NODA Theatre Summer School?

What courses are still available?



## Becoming an Actor Musician

A course for students who love musical theatre, have a passion for all things singing, acting and movement and play a musical instrument. Working with an industry musical director and an industry director/movement director, students will be put through their paces learning about the ever exciting and increasingly popular world of actor musician shows.



## Choreography

Choreography is a vital aspect of any musical theatre or pantomime. This course will provide both experienced and new choreographers with a toolbox of techniques and approaches. Over the week, you will cover a wide range of material and genres so there will be something for everyone, – from traditional dance, to Fosse to more contemporary styles.



## Ensemble Ease and Excellence

This course for both performers and directors will focus on an essential element of theatre which, if done well, can transform productions. Working with fellow students you will explore the possibilities and opportunities within ensemble work.



## Introduction to Stage Management

The course is geared towards people with little or no stage management experience in the amateur arena, teaching and explaining professional practice and techniques. The course is also suitable for directors, committee members and producers who want to gain knowledge of the “nuts and bolts” of putting on a show to enhance future productions.



## Making for Actors / Acting for Makers

A unique course for actors who want to learn how to make expressive masks and puppets, or makers who want to learn how to bring their creations to life on stage.

Using characters created by Dickens and Shakespeare as inspiration, this course will be equally practical and performative.

## When?

26th July – 2nd Aug  
2025

## Where?

Yarnfield Park, Stone,  
Staffordshire

## How much?

£750

This includes accommodation,  
food and your course

[noda.org.uk/  
summerschool](https://noda.org.uk/summerschool)

# Have you heard about individual membership?

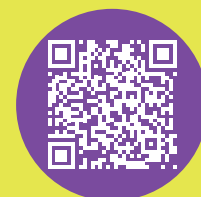
## Have you heard about NODA's individual membership?

For just £36 a year (or £45 for a joint membership), you can be part of something truly special!

Join our **Theatrical Services Directory** and connect with a vibrant community whether you're working, volunteering, studying in the theatre world, or simply passionate about supporting amateur theatre. From directors to chaperones, musical directors to lighting engineers, everyone is welcome here! Let's come together to connect, create, and champion our fantastic industry!

As a member, you'll also receive three copies of **NODA Today** delivered right to your door, access to the amazing **NODA Theatre Summer School**, PLUS you'll have **voting rights** at your regional AGM and the national AGM! Don't miss out on this incredible opportunity—simply visit our website to sign up!

Already an individual member – log into the NODA website and add your details to the Theatrical Services Directory!



Scan the QR code  
to find out more  
about our individual  
memberships

**NODA**  
For every stage



# Supporting amateur theatre at every stage

**"Procedure  
was swift,  
simple  
and effective  
— pleasantly  
surprised"**



Group Insurance  
Management Insurance  
Home Insurance

## **NODA Insurance Services**

[nodainsurance.co.uk](http://nodainsurance.co.uk)

01823 250 736

NODA Insurance is trading style of Lloyd & Whyte Ltd, used under licence from the National Operatic and Dramatic Association. Lloyd & Whyte Ltd are authorised and regulated by the Financial Conduct Authority. Calls may be recorded for use in quality management, training and customer support

[noda.org.uk](http://noda.org.uk)

**NODA**  
For every stage  
Insurance  
Services